

SLOPED ROOF BEYOND

DORMER ROOF BEYOND

DORMER ROOF

TOP OF HEIGHTST ROOF

96.35

TOP OF SUBFLOOR
(3RD. FLR.)

93.33

U/S OF FLOOR JOIST

TOP OF SUBFLOOR
(2ND. FLR.)

90.59

U/S OF FLOOR JOIST

TOP OF SUBFLOOR
(GRND. FLR.)

87.54

U/S OF FLOOR JOIST

ESTABLISHED GRADE = 86.35

86.35

LINE OF EXTERIOR
STEPS DOWN TO COLD ROOM
LINE OF COLD ROOM
EXTERIOR WALL
BEYOND

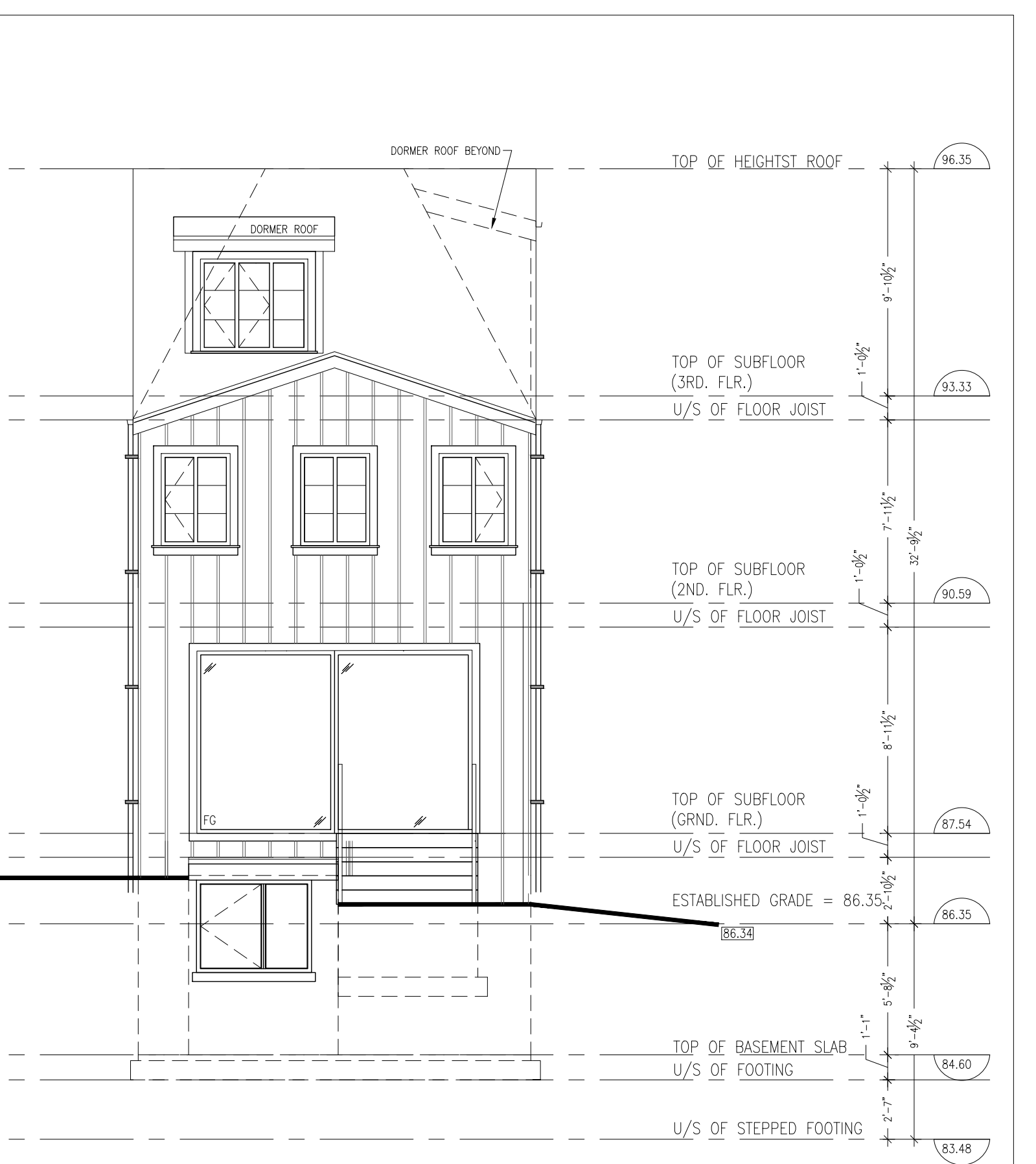
85.50

TOP OF BASEMENT SLAB
U/S OF FOOTING

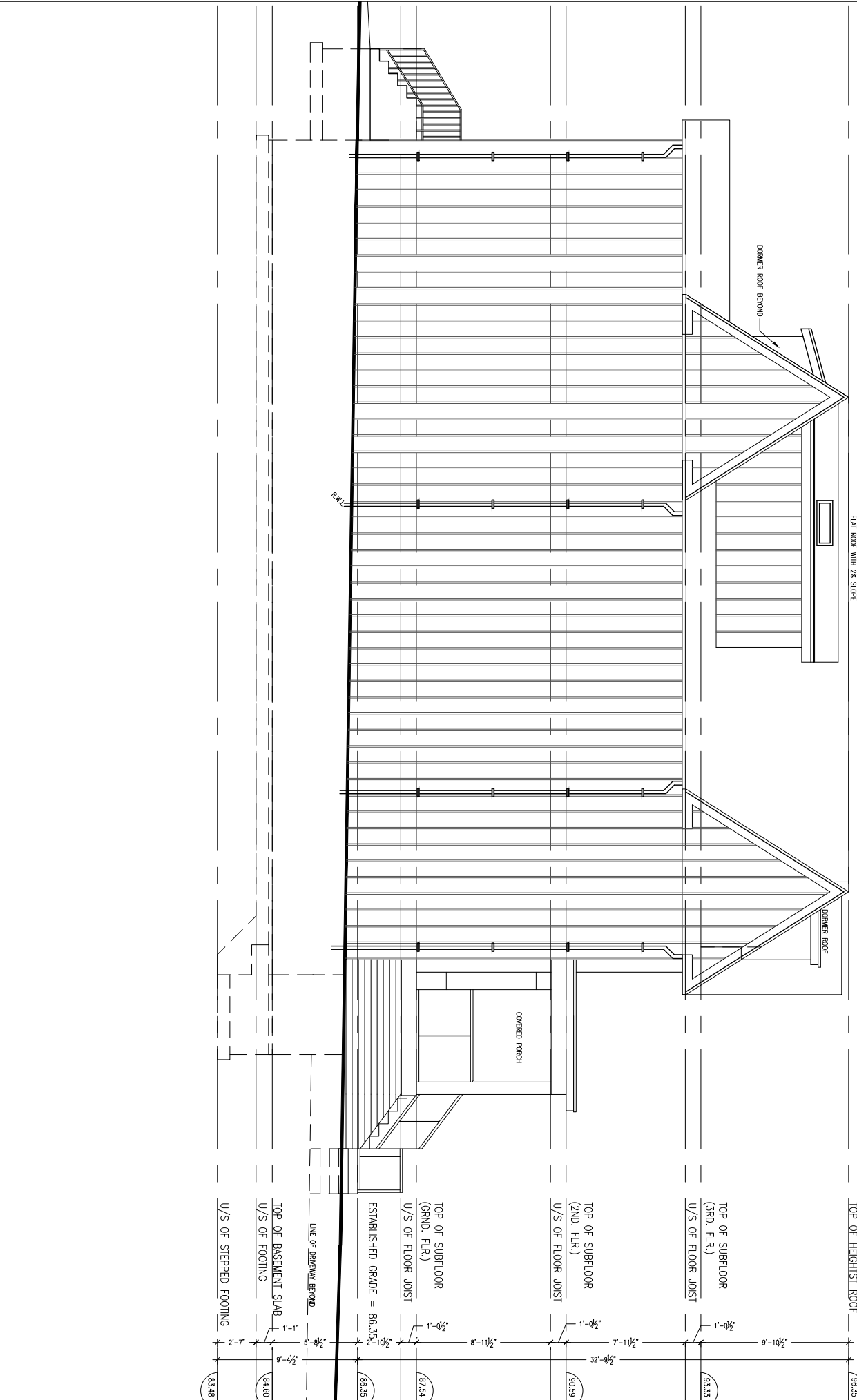
84.60

U/S OF STEPPED FOOTING

83.48



40 Elmer Ave - Rear Elevation



FLAT ROOF WITH 2% SLOPE

DOMNER ROOF BEYOND

DOMNER ROOF

DOMNER ROOF

COVERED PORCH

TOP OF HIGHEST ROOF

TOP OF SUBFLOOR
(3RD. FLR.)
U/S OF FLOOR JOIST

TOP OF SUBFLOOR
(2ND. FLR.)
U/S OF FLOOR JOIST

TOP OF SUBFLOOR
(GRND. FLR.)
U/S OF FLOOR JOIST

ESTABLISHED GRADE = 86.35'

TOP OF BASEMENT SLAB
U/S OF FOOTING

U/S OF STEPPED FOOTING

83.35

83.33

86.39

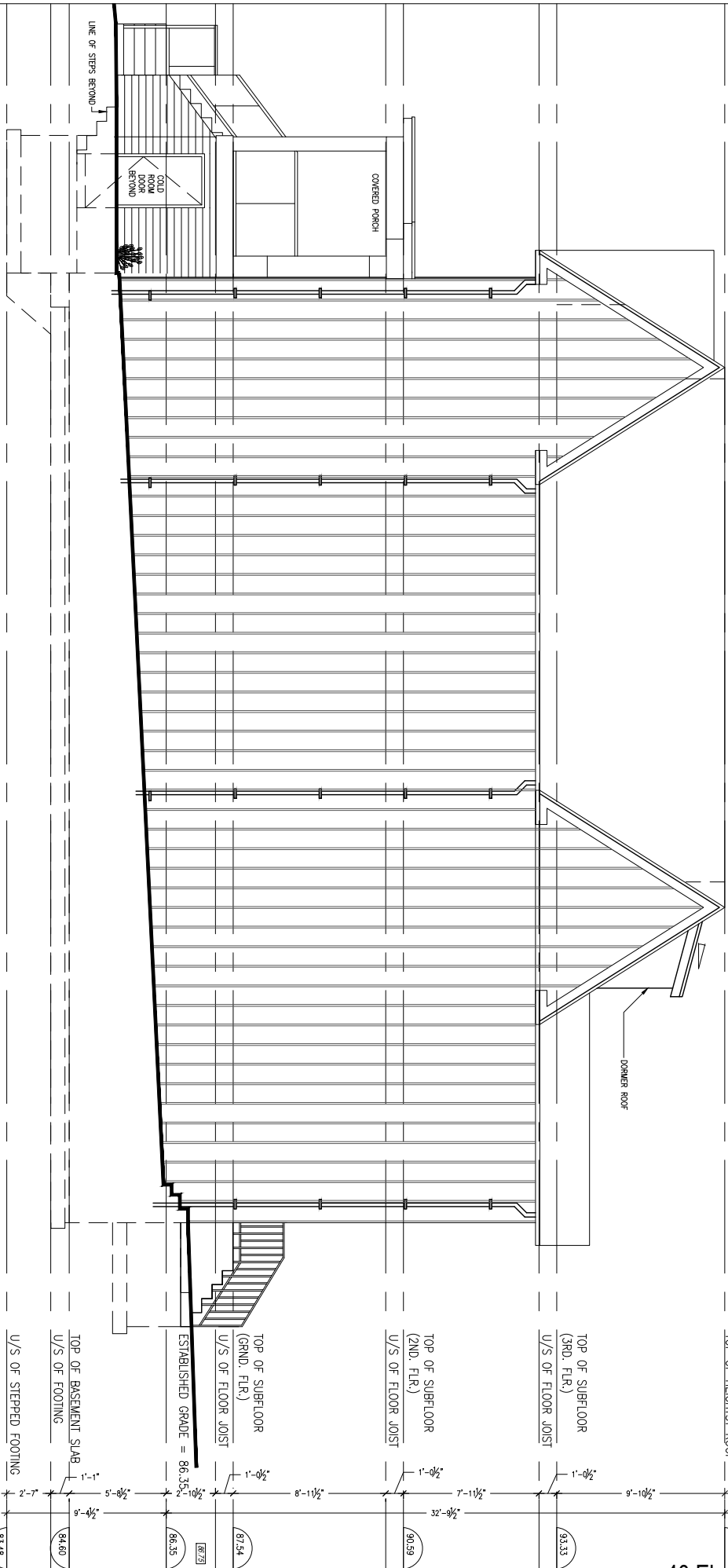
87.54

86.35

84.80

83.48

40 Elmer Ave -
Side Elevation



TOP OF HIGHEST ROOF
96.35

DORMER ROOF

TOP OF SUBFLOOR (3RD. FLR.)
U/S OF FLOOR JOIST
93.33

TOP OF SUBFLOOR (2ND. FLR.)
U/S OF FLOOR JOIST
90.39

TOP OF SUBFLOOR (GRND. FLR.)
U/S OF FLOOR JOIST
87.54

ESTABLISHED GRADE = 86.35

TOP OF BASEMENT SLAB
U/S OF FOOTING
84.60

U/S OF STEPPED FOOTING
83.48

Horizontal dimensions: 2'-7", 1'-1", 5'-8 1/2", 10 1/2", 1'-0 1/2", 8'-11 1/2", 1'-0 1/2", 7'-11 1/2", 32'-8 1/2", 1'-0 1/2", 9'-10 1/2", 96.35

40 Elmer Ave - Side Elevation